

## REVIEW ARTICLE

## MECHANISMS OF DISEASE

## Cystic Fibrosis

Steven M. Rowe, M.D., Stacey Miller, B.S., and Eric J. Sorscher, M.D.

From the Gregory Fleming James Cystic Fibrosis Research Center (S.M.R., S.M., E.J.S.), and the Departments of Medicine (S.M.R., E.J.S.), Pediatrics (S.M.R.), Genetics (E.J.S.), and Physiology and Biophysics (E.J.S.), University of Alabama at Birmingham, Birmingham. Address reprint requests to Dr. Sorscher at the Gregory Fleming James Cystic Fibrosis Research Center, University of Alabama at Birmingham, 1530 3rd Ave. S., MCLM 796, Birmingham, AL 35294, or at sorscher@uab.edu.

Dr. Rowe and Ms. Miller contributed equally to this article.

N Engl J Med 2005;352:1992-2001.  
Copyright © 2005 Massachusetts Medical Society.

**A**DVANCES IN THE CARE OF PATIENTS WITH CYSTIC FIBROSIS HAVE IMPROVED survival, and as a result, patients with the disease now often live beyond the third decade.<sup>1</sup> In addition, developments in the understanding of the genetics and molecular mechanisms of cystic fibrosis have led to new targets for treatment and an increasingly hopeful outlook. This review summarizes the mechanisms underlying the disease, the sequelae stemming from the absence of a functioning cystic fibrosis transmembrane conductance regulator (CFTR), and the therapeutic strategies devised to correct these abnormalities. Progress in the supportive care of patients with the disease has been reviewed elsewhere.<sup>2-4</sup>

## HISTORICAL BACKGROUND

In 1949, Lowe et al. postulated that cystic fibrosis must be caused by a defect in a single gene (and therefore a single protein) on the basis of the autosomal recessive pattern of inheritance of the disease.<sup>5</sup> The characterization of the molecular mechanism, therefore, included early attempts to identify the causative protein. High levels of salt in the sweat of patients with cystic fibrosis suggested an abnormality in fluid and electrolyte transport in the sweat gland, and Quinton established that sweat ducts in such patients are impermeable to chloride.<sup>6</sup> Studies of nasal epithelium and subsequent membrane patch-clamp analysis of epithelial cells from the airways of patients with cystic fibrosis provided conclusive evidence of a defect in chloride permeability of plasma membranes in the lung.<sup>7-10</sup> These findings, which were confirmed by several laboratories worldwide, led to the hypothesis that a defective chloride channel situated in the apical membranes of the lung surface or glandular epithelium accounts for respiratory failure and that this abnormality could explain the other clinical manifestations of cystic fibrosis.

Soon after the discovery of abnormal chloride transport in cystic fibrosis, Collins, Riordan, Tsui, and colleagues identified the gene that is responsible for the disease with the use of linkage-based techniques, independently of any prior knowledge of the structure of the cystic fibrosis protein.<sup>11-13</sup> With a measure of circumspection, they named the gene product CFTR, since the predicted protein sequence did not resemble other ion channels. This name posed a problem for those who thought that a chloride channel was primarily responsible for the clinical manifestations of cystic fibrosis.

## STRUCTURE AND FUNCTION OF CFTR

The hypothesized structure of CFTR placed it squarely in the ATP-binding cassette (ABC), or traffic ATPase, gene family. As is characteristic of this gene family, CFTR protein contains 2 ATP-hydrolysis domains (also termed nucleotide-binding domains) and 12 membrane-spanning alpha helices (Fig. 1). ABC proteins were known to function as mediators of organic solute transport and included, for example, the genes that encode multidrug resistance (e.g., *MDRs*, or P-glycoprotein genes), a gene that encodes

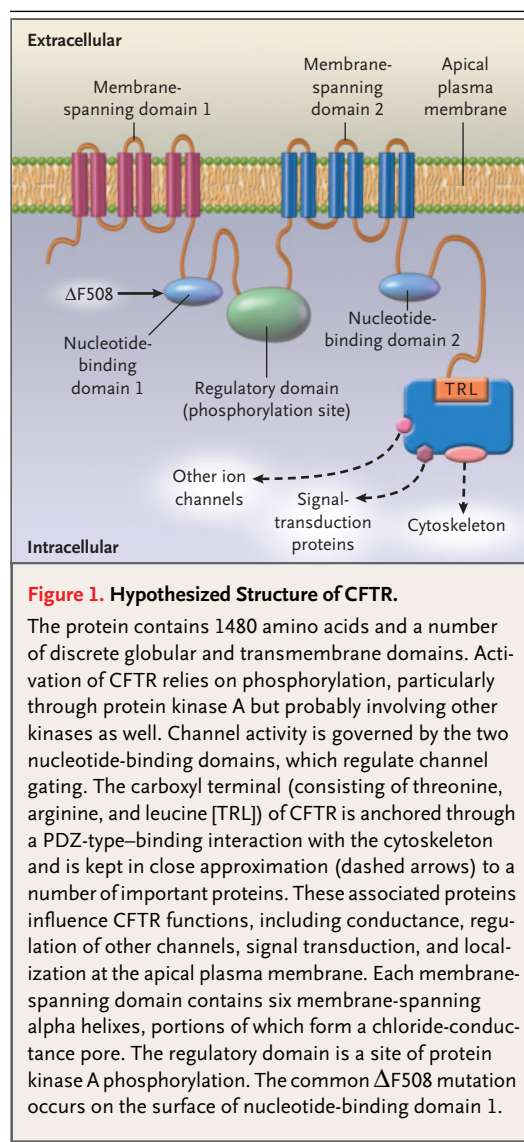
chloroquine resistance in *Plasmodium falciparum*, and a number of prokaryotic and eukaryotic small nutrient and molecular transporters.<sup>14</sup> Because there was no reason to suspect that the cystic fibrosis chloride channel should require ATP hydrolysis, and since the ABC protein family was not characteristic of other ion transporters, the possibility was left open that CFTR might indirectly regulate cellular chloride permeability by other means, rather than act as a chloride channel itself.

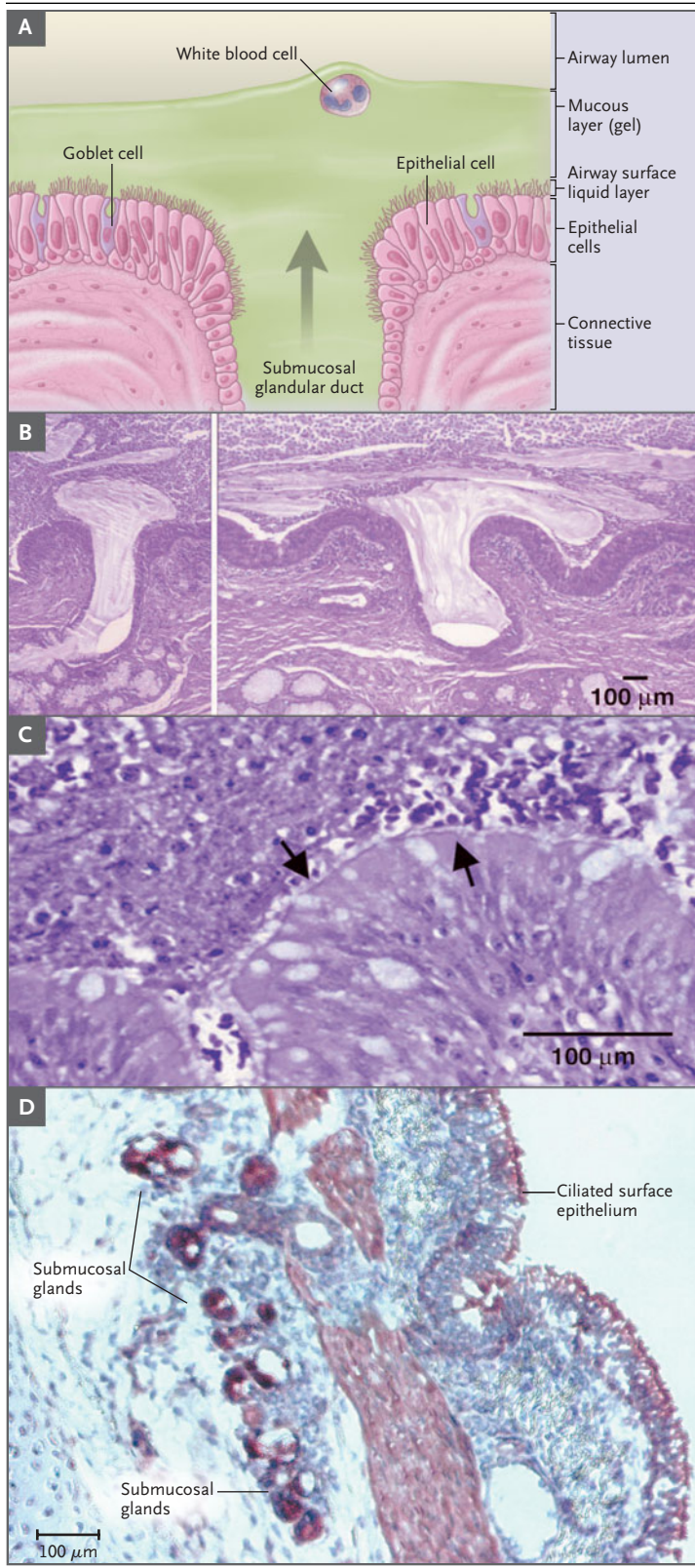
These findings caused a measure of scientific drama that was ultimately resolved in two ways. First, Welsh and colleagues showed that the expression of *CFTR* in cells that lacked chloride channels led to the appearance of a new chloride permeability pathway.<sup>15</sup> In a formal sense, these studies still did not distinguish between the role of CFTR as a chloride channel and its role as a regulator of anion conductance that was unmasked by the expression of *CFTR* in cells lacking chloride channels. The subsequent observations that point mutations in the *CFTR* gene caused subtle alterations in ion-channel selectivity, single-channel conductance, channel gating, and other properties of CFTR supported a direct role of the CFTR protein as a chloride channel. Bear et al. made a second major contribution when they synthesized CFTR in cell-free systems, reconstituted the polytopic membrane protein in lipid bilayers,<sup>16</sup> and definitively established that purified CFTR could act (at least in part) as an ion channel regulated by cyclic AMP (cAMP). These experiments thus reconciled a scientific debate concerning the relationship between CFTR and epithelial ion transport.

Numerous laboratories have now established that CFTR conducts chloride across the cell membrane and is regulated by protein kinase A (PKA) in a cAMP-dependent fashion. The PKA sites within the protein serve as targets for phosphorylation. ATP hydrolysis is mediated by nucleotide-binding domains within the full-length ion channel. A number of other cellular functions have been ascribed to CFTR: it down-regulates transepithelial sodium transport, in particular the epithelial sodium channel<sup>7,17</sup>; it also regulates calcium-activated chloride channels and potassium channels and may serve important functions in exocytosis and the formation of molecular complexes in the plasma membrane.

In the apical plasma membrane, CFTR is part of a multiprotein assembly. The final three amino acids (threonine, arginine, and leucine) anchor the protein to PDZ-type receptors (PDZ domains occur in

intracellular signaling proteins and other proteins associated with the plasma membrane), in close proximity to a number of membrane receptors, ion channels, and the cytoskeleton.<sup>18</sup> Thus, it appears that the role of CFTR in epithelial cells may extend well beyond chloride permeability. In human cystic fibrosis, and in mice with targeted deletions of the *Cfr* gene,<sup>19</sup> the absence of CFTR influences the expression of several other gene products, including proteins important in inflammatory responses, maturational processing, ion transport, and cell signaling. These other proteins are potential modifiers of the cystic fibrosis phenotype and may help explain the substantial differences in clinical severity among patients with the same mutations in *CFTR*.





**PATHOBIOLOGIC FEATURES OF ORGAN SYSTEM DISEASE**

Mucosal obstruction of exocrine glands is the chief contributor to morbidity and mortality in patients with cystic fibrosis (Fig. 2). In the human lung, thick, tenacious secretions obstruct the distal airways and submucosal glands, which express CFTR.<sup>20</sup> Ductular dilatation of these glands (associated with blockage by mucus) and the plastering of airway surfaces by thick, viscous, neutrophil-dominated mucopurulent debris are among the pathological hallmarks of the disease. Glandular hyperplasia in submucosal regions is prominent and surrounded by peribronchiolar inflammation and scar tissue. Submucosal gland ducts are inconspicuous in the lungs of patients without cystic fibrosis, whereas luminal dilatation by mucus is one of the earliest discernible changes in the lungs of newborns and children with cystic fibrosis. Pathogens such as *Pseudomonas aeruginosa*, *Burkholderia cepacia*, *Staphylococcus aureus*, and *Haemophilus influenzae* become well established within firmly fixed airway secretions in patients with cystic fibrosis and are not effectively eradicated. *P. aeruginosa*, for example, specifically adapts to the pulmonary microenvironment in patients with cystic fibrosis through the formation of macrocolonies (or biofilms) and the production of a capsular polysaccharide (an alginate product) that inhibits penetration by anti-

**Figure 2. Extrusion of Mucus Secretion onto the Epithelial Surface of Airways in Cystic Fibrosis.**

Panel A shows a schematic of the surface epithelium and supporting glandular structure of the human airway. In Panel B, the submucosal glands of a patient with cystic fibrosis are filled with mucus, and mucopurulent debris overlies the airway surfaces, essentially burying the epithelium. Panel C is a higher-magnification view of a mucus plug tightly adhering to the airway surface, with arrows indicating the interface between infected and inflamed secretions and the underlying epithelium to which the secretions adhere. (Both Panels B and C were stained with hematoxylin and eosin, with the colors modified to highlight structures.) Infected secretions obstruct airways and, over time, dramatically disrupt the normal architecture of the lung. In Panel D, CFTR is expressed in surface epithelium and serous cells at the base of submucosal glands in a porcine lung sample, as shown by the dark staining, signifying binding by CFTR antibodies to epithelial structures (aminoethylcarbazole detection of horseradish peroxidase with hematoxylin counterstain).

microbial agents and confers the mucoid phenotype.<sup>21,22</sup>

Pulmonary inflammation is another major cause of the decline in respiratory function in patients with cystic fibrosis and may precede the onset of chronic infection. Elevated levels of interleukin-8, interleukin-6, tumor necrosis factor  $\alpha$ , and leukotriene B<sub>4</sub>, along with reduced levels of antiinflammatory cytokines and proteases, have been found in the airways of patients with cystic fibrosis. Toll-like receptors, which recognize a variety of inflammatory mediators (including neutrophil elastase, bacterial lipopolysaccharide, and other microbial products), mediate inflammatory effects in part by activating the transcription factor nuclear factor- $\kappa$ B, which governs a molecular pathway that induces the production of inflammatory proteins and cytokines.<sup>23-26</sup> Recently, an elevated ratio of arachidonic acid to docosahexaenoic acid was found in mucosal scrapings from patients with cystic fibrosis, as compared with scrapings from normal persons and from patients with inflammatory bowel disease; thus, the altered ratio cannot be explained by systemic inflammation alone.<sup>27</sup> These and other inflammatory mediators such as mannose-binding protein and  $\alpha_1$ -antitrypsin influence the progression of lung disease.<sup>27-32</sup>

The absence of normal CFTR activity in patients with cystic fibrosis also engenders obstruction in other organs. Mucinous impaction and thick concretions within pancreatic ducts lead to chronic fibrosis, fatty replacement of the gland, or both and to *formes frustes* of the disease in a large subgroup of patients with a previous diagnosis of idiopathic or alcoholic pancreatitis.<sup>33,34</sup> Nearly 10 percent of patients with the disease are born with intestinal obstruction (meconium ileus), a fatal condition if left untreated. Men with cystic fibrosis are frequently infertile because of glandular obstruction of the vas deferens in utero, which causes involution of the wolffian duct, vas deferens, and associated structures. CFTR mutations can also cause infertility in otherwise normal men as a result of the cystic fibrosis variant, called congenital bilateral absence of the vas deferens.<sup>35</sup> Similar obstruction of bile canaliculi frequently causes hepatic damage and, in some patients, overt cirrhosis.

---

#### MECHANISM UNDERLYING THE SWEAT-GLAND ABNORMALITY

---

There is widespread agreement that defects in ion transport, salt homeostasis, or both are intimately

linked to organ damage in cystic fibrosis. The precise molecular basis for this connection, however, is unknown. Conversely, sweat glands in patients with cystic fibrosis, which usually do not become obstructed or show major pathologic abnormalities, have pronounced abnormalities in sodium chloride homeostasis that are well understood. In human sweat glands, primary secretion elaborated in the glandular coil is modified as it traverses the sweat duct, before emerging on the surface of the skin. Under normal conditions, sodium (followed by chloride counter-ion) is avidly reabsorbed from the ductular lumen, primarily through apical sodium channels and CFTR (Fig. 3). In patients with cystic fibrosis, the absence of functioning CFTR restricts reabsorption of chloride, thereby limiting the amount of salt that can be reclaimed. Because there is no other pathway for effective chloride reabsorption in the duct, sodium is also poorly absorbed, and sweat emerging on the skin surface contains a high level of salt. By the same token, in cystic fibrosis, the transepithelial potential difference across the sweat duct (the lumen-negative transepithelial voltage) is two to three times the normal value. The increased lumen-negative surface charge is caused by an inability to reabsorb chloride despite the continued existence of pathways for sodium uptake.

---

#### BIOELECTRIC MEASUREMENTS IN THE LUNG

---

Abnormalities of salt and fluid metabolism have also been examined *in vivo* in human and murine lungs. Knowles et al. popularized a method for measuring the transepithelial potential difference across nasal and lower airways in human subjects with the use of mucosal superperfusion.<sup>36</sup> This *in vivo* bioelectric measurement reveals virtually pathognomonic defects and can be used as a diagnostic test for cystic fibrosis. For example, under basal conditions, the transepithelial potential difference due to sodium uptake is two to three times as great (lumen negative) in patients with cystic fibrosis as in persons without the disease.

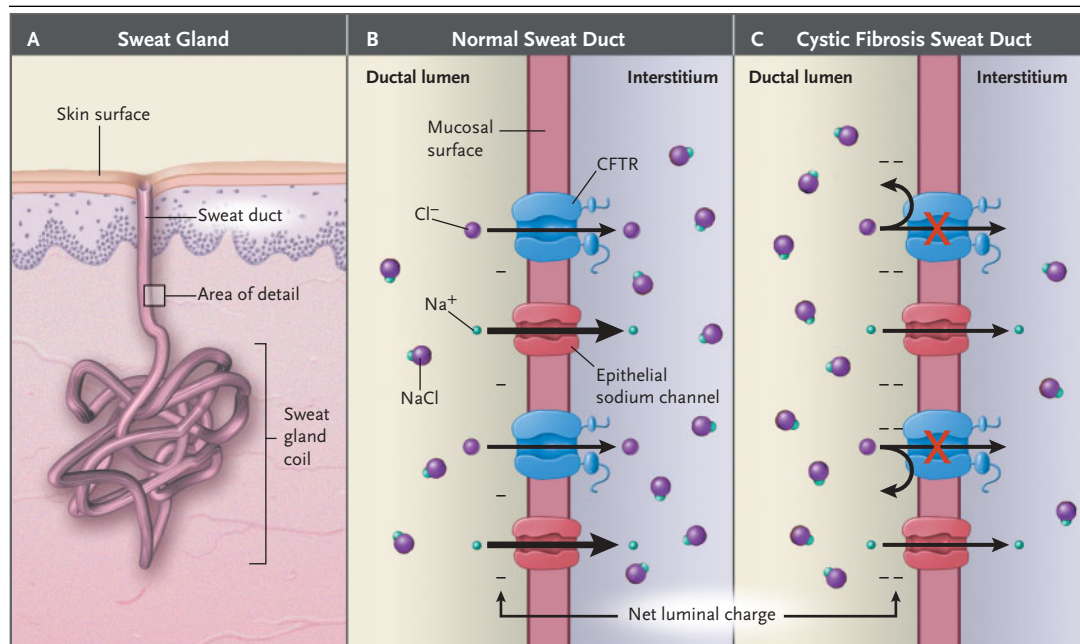
A traditional way of explaining airway mucosal obstruction (the low-volume model) argues persuasively that pulmonary surface epithelium in cystic fibrosis behaves in a fashion essentially opposite that of the sweat duct (Fig. 4). In this model, the absence of CFTR leads to overactivity of sodium absorption through the epithelial sodium channel (Fig. 4D). The mucosal surface has a more nega-

tive charge because overall chloride permeability is less than that of sodium. However, because  $\text{Cl}^-$  permeability (through non-CFTR  $\text{Cl}^-$  uptake pathways) is thought to be available in the lung, the result is a relative increase in the absorption of sodium, chloride, and fluid. This increase causes the dehydration of airway surfaces and defective mucociliary transport. Evidence in favor of the low-volume model derives from compelling in vitro experiments and a mouse model characterized by excessive functioning of the epithelial sodium channel with a lung phenotype similar to that in human cystic fibrosis.<sup>37</sup>

An alternative hypothesis (the high-salt model) contends that the airway epithelial surface in patients with cystic fibrosis behaves similarly to sweat ducts, in that CFTR is the major pathway for counter-ion absorption (Fig. 4C). The model was advanced in part to help unify bioelectric findings in the disease. When CFTR is absent, chloride cannot be reabsorbed — a situation that again resembles that of sweat-gland epithelium in cystic fibrosis.

Consequently, the transepithelial potential difference becomes hyperpolarized: the inability of  $\text{Cl}^-$  ions to follow  $\text{Na}^+$  results in a more negatively charged mucosal surface. One interpretation of this hypothesis is that an elevated level of sodium chloride in the airway-surface liquid would inactivate endogenous antimicrobial peptides and thereby predispose patients with the disease to bacterial infections with pathogens such as *P. aeruginosa*.<sup>38</sup>

When normal airway mucosa is superperfused with a solution designed to open CFTR or induce luminal chloride secretion, additional changes in the potential difference occur. These are compatible with chloride secretion (i.e., an increase in the lumen-negative potential difference) in normal persons but not in those with cystic fibrosis. Therefore, regardless of which model of sodium chloride reabsorption (low-volume or high-salt) better accounts for certain aspects of pulmonary insufficiency in cystic fibrosis, there is a strong consensus that in patients with the disease, the airways lack the normal ability to secrete chloride through CFTR.



**Figure 3. Mechanism Underlying Elevated Sodium Chloride Levels in the Sweat of Patients with Cystic Fibrosis.**

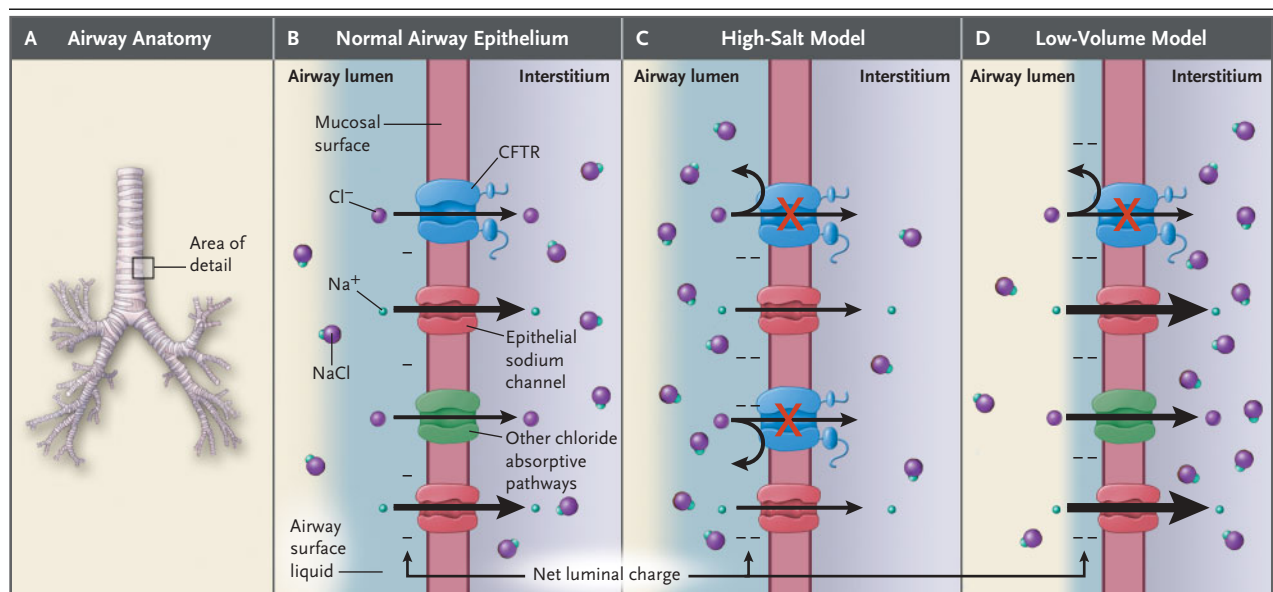
Sweat ducts (Panel A) in patients with cystic fibrosis differ from those in people without the disease in the ability to reabsorb chloride before the emergence of sweat on the surface of the skin. A major pathway for  $\text{Cl}^-$  absorption is through CFTR, situated within luminal plasma membranes of cells lining the duct (i.e., on the apical, or mucosal, cell surface) (Panel B). Diminished chloride reabsorption in the setting of continued sodium uptake leads to an elevated transepithelial potential difference across the wall of the sweat duct, and the lumen becomes more negatively charged because of a failure to reabsorb chloride (Panel C). The result is that total sodium chloride flux is markedly decreased, leading to increased salt content. The thickness of the arrows corresponds to the degree of movement of ions.

Compounds such as adenosine, genistein, and phosphodiesterase inhibitors augment residual chloride secretion by mutant CFTR channels and form the basis of clinical experiments to restore function in patients with cystic fibrosis. A unified model of organ-system pathophysiology emanates naturally from a universally acknowledged defect in chloride secretion in the disease.

#### GLANDULAR SECRETION AND SMALL-AIRWAY PHYSIOLOGY

Abnormalities in sodium chloride absorption or antimicrobial peptide function that are invoked to explain specific pulmonary defects in cystic fibrosis are unlikely to contribute to disease-related damage in other organs. In the pancreas, there is no evidence of either sodium hyperabsorption or overac-

tivity of the epithelial sodium channel, and abnormalities of antimicrobial peptides are not believed to contribute to exocrine pancreatic insufficiency in cystic fibrosis. In the intestine, neither immune alterations nor increased susceptibility to clinically apparent infection has been implicated. In tissues in which sodium transport has been examined (e.g., in samples of rectal mucosa and proximal ileum from patients with cystic fibrosis and in the obstructed intestine in the mouse model of the disease<sup>39</sup>), the activity of sodium-uptake pathways is variable and in some cases is decreased. By contrast, virtually every tissue that is affected by the disease is defective in chloride and fluid secretion. It is generally believed that in pancreatic ducts, the failure of the release of anions (including those of chloride and bicarbonate) due to CFTR dysfunction and deficient fluid secretion impairs flushing



**Figure 4. Models Explaining the Transepithelial Potential Difference across the Airway Epithelium in Cystic Fibrosis.**

Under normal conditions, sodium chloride is absorbed from the airways (Panel A). The first step of this process uses sodium and chloride absorptive pathways present in the luminal (apical) membranes of airway-surface epithelial cells, designated as the mucosal surface (Panel B). In a bioelectric assay (a measurement of the transepithelial potential difference), the lumen is negative in part because of the relative impermeability of chloride as compared with sodium. The relative contribution of CFTR and other non-CFTR  $\text{Cl}^-$  permeability pathways is not known. The transepithelial potential difference is markedly hyperpolarized (i.e., the lumen is much more negatively charged) in cystic fibrosis. Two models have been proposed to explain this difference. In the high-salt model (Panel C), the situation resembles that of the sweat duct, in which the absence of CFTR leads to the inability to reabsorb chloride ion from airway-surface liquid. Because of the continued activity of sodium ion reabsorption, which is dependent on epithelial sodium channels, the airway surface negativity is increased (lumen-negative). According to this model, although a large charge separation is observed (with positively charged sodium ions moving across the airway wall and negatively charged chloride ions remaining behind), the net sodium chloride reabsorption decreases because of the inability to reabsorb chloride counter-ions. In the low-volume model (Panel D), both sodium and chloride are hyperabsorbed. The airways of patients with cystic fibrosis are slightly less permeable to chloride ions than they are to sodium ions, a process that leads to an increased transepithelial potential difference. This model predicts a depletion in the volume of airway-surface liquid (shown in blue). The thickness of the arrows corresponds to the degree of movement of ions.

of the exocrine glands, causing an accumulation of mucus, obstruction, and consequent end-organ damage. A pronounced abnormality in chloride secretion by intestinal tissues has been well documented in cystic fibrosis and provides a compelling explanation for end-organ dysfunction. Similar arguments can be made regarding the hyperviscous secretions in the liver, vas deferens, and other glands in cystic fibrosis.

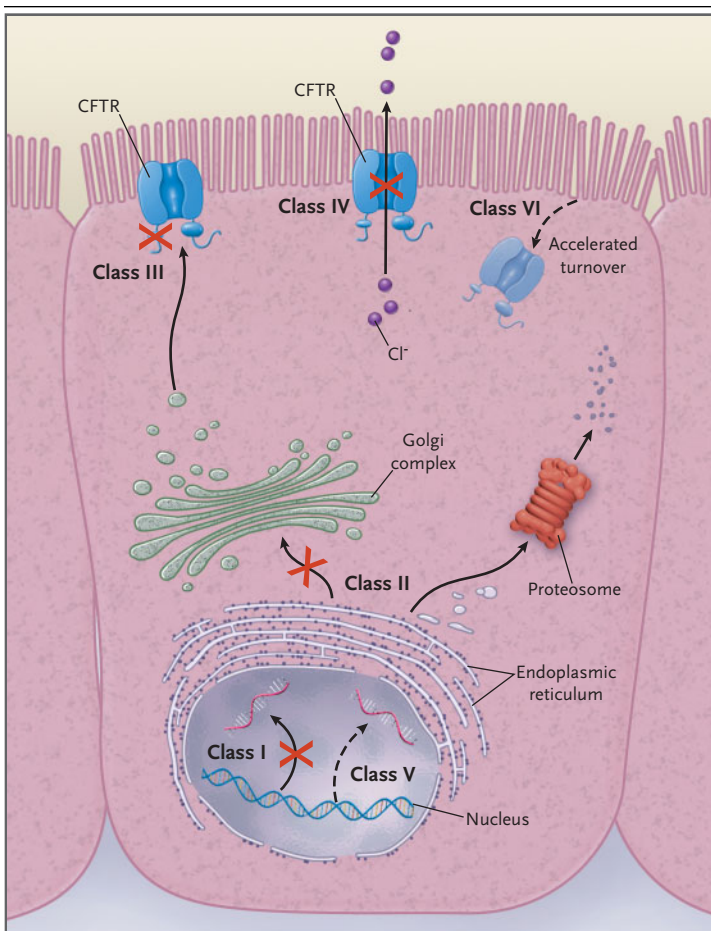
New tools have emerged for testing the hypothesis that defective chloride secretion in airways is also a fundamental cause of pulmonary failure in cystic fibrosis. The finding of dilated glandular structures (which occurs very early in cystic fibrosis—

associated lung disease) implicates abnormal clearance of glandular mucus from the ducts (a process reminiscent of the situation in the pancreas, liver, and intestine in cystic fibrosis). The levels of CFTR in airway serous glandular cells are among the highest of any cell type in the body (Fig. 2D).<sup>20</sup> In the small airways, where surface epithelial cells contribute to the production of mucus, an analogous defect in chloride and fluid secretion could result in decreased surface liquid in airways and similar mucosal obstruction.

These considerations have led to the idea that lung disease in cystic fibrosis is primarily attributable to a failure of CFTR-dependent flushing of mucous secretion from the glands, small airways, or both. Joo et al. have directly measured glandular secretions in lung tissues in cystic fibrosis.<sup>40,41</sup> Their studies suggest fundamental abnormalities in the mobilization and clearance of mucus from submucosal glands (a process that is also crucial in the distal small airways). Similar conclusions have been reached by Verkman and colleagues.<sup>42,43</sup> Attempts to activate CFTR-independent chloride conductance with secretagogues such as uridine 5'-triphosphate or related compounds (which may restore or enhance mucociliary clearance) have yielded encouraging results in clinical trials.<sup>44,45</sup> Models based on defects in glandular and airway secretion as primary contributors to respiratory decline therefore continue to represent a vital and unifying means for understanding pulmonary destruction due to defects in CFTR.

MUTATIONS IN *CFTR*  
AND THEIR CONSEQUENCES

The *CFTR* gene encompasses approximately 180,000 base pairs on the long arm of chromosome 7. The protein contains 1480 amino acids (Fig. 1). More than 1000 disease-associated mutations have been described in the coding sequence, messenger RNA splice signals, and other regions. These mutations can be classified on the basis of the mechanism by which they are believed to cause disease (Fig. 5). The most common mutation, which is termed  $\Delta F508$  and is present in approximately 70 percent of defective *CFTR* alleles and in 90 percent of patients with cystic fibrosis in the United States, is categorized as a class II defect. CFTR with the  $\Delta F508$  mutation lacks a phenylalanine (F) residue at position 508. The defective protein retains substantial chloride-channel function in cell-free lipid mem-



**Figure 5. Categories of *CFTR* Mutations.**

Classes of defects in the *CFTR* gene include the absence of synthesis (class I); defective protein maturation and premature degradation (class II); disordered regulation, such as diminished ATP binding and hydrolysis (class III); defective chloride conductance or channel gating (class IV); a reduced number of *CFTR* transcripts due to a promoter or splicing abnormality (class V); and accelerated turnover from the cell surface (class VI).<sup>46</sup>

branes. When synthesized by the normal cellular machinery, however, the protein is rapidly recognized as misfolded and is degraded shortly after synthesis, before it can reach its crucial site of action at the cell surface. Like  $\Delta F508$ , several other clinically important mutations — such as N1303K, G85E, and G91R — lead to misfolded CFTR protein that is prematurely degraded.

About 5 to 10 percent of *CFTR* mutations are due to premature truncation or nonsense alleles (designated by “X,” such as G542X, a class I mutation). As a result of a genetic founder effect, prematurely truncated CFTR is particularly prevalent among persons of Ashkenazi Jewish descent. Other *CFTR* mutations encode properly processed, full-length CFTR protein that lacks normal ion-channel activity. For example, the G551D mutation (class III) is believed to possess little or no chloride-channel function in vivo because of abnormal function of a nucleotide-binding domain, resulting in disordered regulation. The A455E mutation (class IV) exhibits only partial CFTR ion-channel activity, a feature that probably explains a less severe pulmonary phenotype.<sup>47</sup> Other mutation classes include reduced numbers of CFTR transcripts (class V) and defective CFTR stability at the cell surface (class VI).<sup>48-50</sup>

#### INTERVENTIONS TAILORED TO SPECIFIC CFTR DEFECTS

Insight into the cellular consequences of defective CFTR suggests a role for tailored therapies, a predominant theme in clinical research on cystic fibrosis. For example, robotic drug screening of more than a million random compounds has led to the discovery of compounds that correct the  $\Delta F508$  abnormality by restoring the mutant protein to its normal position at the cell surface (thereby partially restoring chloride-channel function).<sup>51,52</sup> The recently elucidated crystal structure of nucleotide-binding domain 1 localizes the crucial phenylalanine 508 residue to a loop on the external surface of the domain. Because of this structure, drug-screening laboratories can test the specificity of  $\Delta F508$ -correcting compounds by co-crystallization with the CFTR protein.<sup>53</sup> Curcumin, a nontoxic compound and the major constituent of the spice

tumeric, has been shown to correct  $\Delta F508$  processing in a number of in vitro model systems and prolong life in mice that are homozygous for the  $\Delta F508$  mutation.<sup>54,55</sup> New compounds that correct this fundamental processing abnormality in CFTR should undergo clinical testing in the near future.

A number of agents have also been shown to suppress premature stop codons in *CFTR* (class I) mutations, including the surprising finding that ribosomally active drugs such as gentamicin may be capable of correcting premature stop codons in human subjects.<sup>56,57</sup> This same concept has been applied to other diseases caused by premature stop codons, including Duchenne’s muscular dystrophy, Hurler’s syndrome, and disorders resulting from mutations in the p53 tumor-suppressor gene.<sup>58-60</sup> High-throughput screening programs specifically designed to identify drugs that activate residual CFTR activity (class III and IV mutations) have also been successful.<sup>61-64</sup>

#### SUMMARY

Important advances have improved our understanding of the role of the CFTR protein in the progression of suppurative pulmonary failure in cystic fibrosis. These discoveries are ushering in a new era of translational research that incorporates specific therapeutic targets and new cellular pathways. Progress in research on cystic fibrosis will continue to rely on an improved understanding of CFTR function and its relationship to mucociliary clearance, airway secretion, and other ion channels. Clinical advances directed at the correction of CFTR function predict an optimistic future for patients with cystic fibrosis and their families.

Dr. Sorscher is coinventor of a method of making and using human papillomavirus vectors for transduction of host cells and a coinventor of a method of activating chloride secretion. Patents on these methods are unlicensed and held by the University of Alabama.

We are indebted to Drs. J.P. Clancy, James Hagood, Jeff Wine, Jonathan Widdecome, Paul Quinton, Michael Welsh, and Garry Cutting for their useful discussion and suggestions; to Drs. Zsuzsa Bebek and David Kelly for their scientific contributions to the figures; to Mikelle Foster, Jane Schell, and David Fischer for assistance in the preparation of the manuscript; and to Chris Valarie, Anne Marie Seibel, and Hughes Evans for initiating some of the analysis described in the article.

#### REFERENCES

1. Cystic Fibrosis Foundation National Patient Registry Annual Data Report 2003. Bethesda, Md.: Cystic Fibrosis Foundation, 2004.
2. Gibson RL, Burns JL, Ramsey BW. Pathophysiology and management of pulmonary infections in cystic fibrosis. *Am J Respir Crit Care Med* 2003;168:918-51.
3. Ratjen F, Doring G. Cystic fibrosis. *Lancet* 2003;361:681-9.
4. Yankaskas JR, Marshall BC, Sufian B, Simon RH, Rodman D. Cystic fibrosis adult



- care: consensus conference report. *Chest* 2004;125:Suppl:1S-39S.
5. Lowe CU, May CD, Reed SC. Fibrosis of the pancreas in infants and children: a statistical study of clinical and hereditary features. *Am J Dis Child* 1949;78:349-74.
  6. Quinton PM. Missing Cl conductance in cystic fibrosis. *Am J Physiol* 1986;251:C649-C652.
  7. Knowles M, Gatzky J, Boucher R. Relative ion permeability of normal and cystic fibrosis nasal epithelium. *J Clin Invest* 1983;71:1410-7.
  8. Welsh MJ, Liedtke CM. Chloride and potassium channels in cystic fibrosis airway epithelia. *Nature* 1986;322:467-70.
  9. Welsh MJ. An apical-membrane chloride channel in human tracheal epithelium. *Science* 1986;232:1648-50.
  10. Schoumacher RA, Shoemaker RL, Halm DR, Tallant EA, Wallace RW, Frizzell RA. Phosphorylation fails to activate chloride channels from cystic fibrosis airway cells. *Nature* 1987;330:752-4.
  11. Riordan JR, Rommens JM, Kerem B, et al. Identification of the cystic fibrosis gene: cloning and characterization of complementary DNA. *Science* 1989;245:1066-73. [Erratum, *Science* 1989;245:1437.]
  12. Kerem B, Rommens JM, Buchanan JA, et al. Identification of the cystic fibrosis gene: genetic analysis. *Science* 1989;245:1073-80.
  13. Rommens JM, Iannuzzi MC, Kerem B, et al. Identification of the cystic fibrosis gene: chromosome walking and jumping. *Science* 1989;245:1059-65.
  14. Borst P, Elferink RO. Mammalian ABC transporters in health and disease. *Annu Rev Biochem* 2002;71:537-92.
  15. Rich DP, Anderson MP, Gregory RJ, et al. Expression of cystic fibrosis transmembrane conductance regulator corrects defective chloride channel regulation in cystic fibrosis airway epithelial cells. *Nature* 1990;347:358-63.
  16. Bear CE, Li CH, Kartner N, et al. Purification and functional reconstitution of the cystic fibrosis transmembrane conductance regulator (CFTR). *Cell* 1992;68:809-18.
  17. Kunzelmann K, Schreiber R, Nitschke R, Mall M. Control of epithelial Na<sup>+</sup> conductance by the cystic fibrosis transmembrane conductance regulator. *Pflugers Arch* 2000;440:193-201.
  18. Short DB, Trotter KW, Reczek D, et al. An apical PDZ protein anchors the cystic fibrosis transmembrane conductance regulator to the cytoskeleton. *J Biol Chem* 1998;273:19797-801.
  19. Xu Y, Clark JC, Aronow BJ, et al. Transcriptional adaptation to cystic fibrosis transmembrane conductance regulator deficiency. *J Biol Chem* 2003;278:7674-82.
  20. Engelhardt JF, Yankaskas JR, Ernst SA, et al. Submucosal glands are the predominant site of CFTR expression in the human bronchus. *Nat Genet* 1992;2:240-8.
  21. Wyckoff TJ, Thomas B, Hassett DJ, Wozniak DJ. Static growth of mucoid *Pseudomonas aeruginosa* selects for non-mucoid variants that have acquired flagellum-dependent motility. *Microbiology* 2002;148:3423-30.
  22. Whiteley M, Banger MG, Bumgarner RE, et al. Gene expression in *Pseudomonas aeruginosa* biofilms. *Nature* 2001;413:860-4.
  23. Sagel SD, Sontag MK, Wagener JS, Kapsner RK, Osberg I, Accurso FJ. Induced sputum inflammatory measures correlate with lung function in children with cystic fibrosis. *J Pediatr* 2002;141:811-7.
  24. Konstan MW, Davis PB. Pharmacological approaches for the discovery and development of new anti-inflammatory agents for the treatment of cystic fibrosis. *Adv Drug Deliv Rev* 2002;54:1409-23.
  25. Koehler DR, Downey GP, Swezey NB, Tanswell AK, Hu J. Lung inflammation as a therapeutic target in cystic fibrosis. *Am J Respir Cell Mol Biol* 2004;31:377-81.
  26. Muir A, Soong G, Sokol S, et al. Toll-like receptors in normal and cystic fibrosis airway epithelial cells. *Am J Respir Cell Mol Biol* 2004;30:777-83.
  27. Freedman SD, Blanco PG, Zaman MM, et al. Association of cystic fibrosis with abnormalities in fatty acid metabolism. *N Engl J Med* 2004;350:560-9.
  28. Garred P, Pressler T, Madsen HO, et al. Association of mannose-binding lectin gene heterogeneity with severity of lung disease and survival in cystic fibrosis. *J Clin Invest* 1999;104:431-7.
  29. Puchelle E, De Bentzmann S, Hubeau C, Jacquot J, Gaillard D. Mechanisms involved in cystic fibrosis airway inflammation. *Pediatr Pulmonol* 2001;Suppl 23:143-5.
  30. Sagel SD, Accurso FJ. Monitoring inflammation in CF: cytokines. *Clin Rev Allergy Immunol* 2002;23:41-57.
  31. Hilliard JB, Konstan MW, Davis PB. Inflammatory mediators in CF patients. *Methods Mol Med* 2002;70:409-31.
  32. Frangolias DD, Ruan J, Wilcox PJ, et al. Alpha 1-antitrypsin deficiency alleles in cystic fibrosis lung disease. *Am J Respir Cell Mol Biol* 2003;29:390-6.
  33. Cohn JA, Friedman KJ, Noone PG, Knowles MR, Silverman LM, Jowell PS. Relation between mutations of the cystic fibrosis gene and idiopathic pancreatitis. *N Engl J Med* 1998;339:653-8.
  34. Sharer N, Schwarz M, Malone G, et al. Mutations of the cystic fibrosis gene in patients with chronic pancreatitis. *N Engl J Med* 1998;339:645-52.
  35. Chillón M, Casals T, Mercier B, et al. Mutations in the cystic fibrosis gene in patients with congenital absence of the vas deferens. *N Engl J Med* 1995;332:1475-80.
  36. Knowles M, Gatzky J, Boucher R. Increased bioelectric potential difference across respiratory epithelia in cystic fibrosis. *N Engl J Med* 1981;305:1489-95.
  37. Mall M, Grubb BR, Harkema JR, O'Neal WK, Boucher RC. Increased airway epithelial Na<sup>+</sup> absorption produces cystic fibrosis-like lung disease in mice. *Nat Med* 2004;10:487-93.
  38. Smith JJ, Travis SM, Greenberg EP, Welsh MJ. Cystic fibrosis airway epithelia fail to kill bacteria because of abnormal airway surface fluid. *Cell* 1996;85:229-36.
  39. Grubb BR. Ion transport across the normal and CF neonatal murine intestine. *Am J Physiol* 1999;277:G167-G174.
  40. Joo NS, Irokawa T, Wu JV, Robbins RC, Whyte RI, Wine JJ. Absent secretion to vasoactive intestinal peptide in cystic fibrosis airway glands. *J Biol Chem* 2002;277:50710-5.
  41. Joo NS, Saenz Y, Krouse ME, Wine JJ. Mucus secretion from single submucosal glands of pig: stimulation by carbachol and vasoactive intestinal peptide. *J Biol Chem* 2002;277:28167-75.
  42. Jayaraman S, Joo NS, Reitz B, Wine JJ, Verkman AS. Submucosal gland secretions in airways from cystic fibrosis patients have normal [Na<sup>+</sup>] and pH but elevated viscosity. *Proc Natl Acad Sci U S A* 2001;98:8119-23.
  43. Verkman AS, Song Y, Thiagarajah JR. Role of airway surface liquid and submucosal glands in cystic fibrosis lung disease. *Am J Physiol Cell Physiol* 2003;284:C2-C15.
  44. Olivier KN, Bennett WD, Hohneker KW, et al. Acute safety and effects on mucociliary clearance of aerosolized uridine 5'-triphosphate +/- amiloride in normal human adults. *Am J Respir Crit Care Med* 1996;154:217-23.
  45. Deterding RR, La Vange L, Mathews D, et al. Safety and efficacy of INS37217 inhalation solution, a novel P2Y2 receptor agonist, in patients with mild cystic fibrosis: results of a phase 2 multi-center study. *Pediatr Pulmonol Suppl* 2004;38:249. abstract.
  46. Zeitlin PL. Pharmacologic restoration of delta F508 CFTR-mediated chloride current. *Kidney Int* 2000;57:832-7.
  47. Gan KH, Veeze HJ, van den Ouweland AM, et al. A cystic fibrosis mutation associated with mild lung disease. *N Engl J Med* 1995;333:95-9.
  48. Welsh MJ, Smith AE. Molecular mechanisms of CFTR chloride channel dysfunction in cystic fibrosis. *Cell* 1993;73:1251-4.
  49. Zielenski J, Tsui LC. Cystic fibrosis: genotypic and phenotypic variations. *Annu Rev Genet* 1995;29:777-807.
  50. Haardt M, Benharouga M, Lechardeur D, Kartner N, Lukacs GL. C-terminal truncations destabilize the cystic fibrosis transmembrane conductance regulator without impairing its biogenesis: a novel class of mutation. *J Biol Chem* 1999;274:21873-7.
  51. Verkman AS, Pedemonte N, Du K, et al. Small-molecule activators (potentiators and correctors) of DF508-CFTR identified by high-throughput screening. *Pediatr Pulmonol Suppl* 2003;36:290. abstract.
  52. Verkman AS. Drug discovery in academia. *Am J Physiol Cell Physiol* 2004;286:C465-C474.
  53. Lewis HA, Buchanan SG, Burley SK, et al. Structure of nucleotide-binding domain 1

- of the cystic fibrosis transmembrane conductance regulator. *EMBO J* 2004;23:282-93.
54. Zeitlin P. Can curcumin cure cystic fibrosis? *N Engl J Med* 2004;351:606-8.
55. Egan ME, Pearson M, Weiner SA, et al. Curcumin, a major constituent of turmeric, corrects cystic fibrosis defects. *Science* 2004;304:600-2.
56. Clancy JP, Bebok Z, Ruiz F, et al. Evidence that systemic gentamicin suppresses premature stop mutations in patients with cystic fibrosis. *Am J Respir Crit Care Med* 2001;163:1683-92.
57. Wilschanski M, Yahav Y, Yaacov Y, et al. Gentamicin-induced correction of CFTR function in patients with cystic fibrosis and CFTR stop mutations. *N Engl J Med* 2003;349:1433-41.
58. Keeling KM, Brooks DA, Hopwood JJ, Li P, Thompson JN, Bedwell DM. Gentamicin-mediated suppression of Hurler syndrome stop mutations restores a low level of alpha-L-iduronidase activity and reduces lysosomal glycosaminoglycan accumulation. *Hum Mol Genet* 2001;10:291-9.
59. Wagner KR, Hamed S, Hadley DW, et al. Gentamicin treatment of Duchenne and Becker muscular dystrophy due to nonsense mutations. *Ann Neurol* 2001;49:706-11.
60. Keeling KM, Bedwell DM. Clinically relevant aminoglycosides can suppress disease-associated premature stop mutations in the IDUA and P53 cDNAs in a mammalian translation system. *J Mol Med* 2002;80:367-76.
61. Galiotta LV, Jayaraman S, Verkman AS. Cell-based assay for high-throughput quantitative screening of CFTR chloride transport agonists. *Am J Physiol Cell Physiol* 2001;281:C1734-42.
62. Galiotta LJ, Springsteel ME, Eda M, et al. Novel CFTR chloride channel activators identified by screening of combinatorial libraries based on flavone and benzoquinolinium lead compounds. *J Biol Chem* 2001;276:19723-8.
63. Ma T, Vetrivel L, Yang H, et al. High-affinity activators of cystic fibrosis transmembrane conductance regulator (CFTR) chloride conductance identified by high-throughput screening. *J Biol Chem* 2002;277:37235-41.
64. Gill S, Gill R, Lee SS, et al. Flux assays in high throughput screening of ion channels in drug discovery. *Assay Drug Dev Technol* 2003;1:709-17.

Copyright © 2005 Massachusetts Medical Society.

#### JOURNAL EDITORIAL FELLOW

The *Journal's* editorial office invites applications for a one-year research fellowship beginning in July 2006 from individuals at any stage of training. The editorial fellow will work on *Journal* projects and will participate in the day-to-day editorial activities of the *Journal* but is expected in addition to have his or her own independent projects. Please send curriculum vitae and research interests to the Editor-in-Chief, 10 Shattuck St., Boston, MA 02115 (fax, 617-739-9864), by September 30, 2005.